

To create a bootable usb drive (flash drive of USB HD) do the following:

1: Open an elevated CMD window

2 Type diskpart

3: type list disk

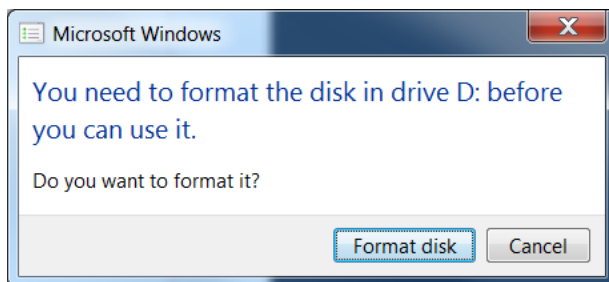
This will list the available disks in your system. If you don't know exactly which one is the one you want to use open disk management for further information.

http://wdc.custhelp.com/app/answers/detail/a_id/1284/~/how-to-access-disk-management-in-windows-xp,-vista,-7-or-8-to-manage-hard-drives

4: Type select disk x (where x is the number corresponding for your USB disk.) The letter such as D will not work.

5: Type clean

6: Type create partition primary at which point you *may* get:



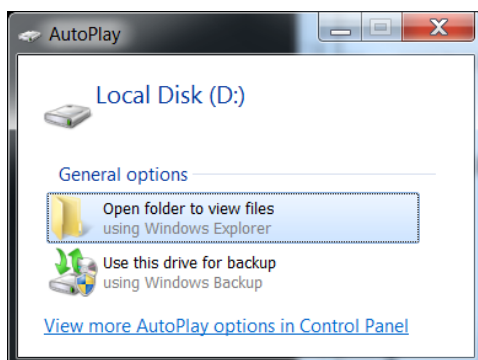
If you do click cancel

7: Type active

8: Type format fs=ntfs quick

9: Type assign

At which point you will see



10: Type exit

Create the Boot sector/copy files

11: At this point you can use Win7 *or Win8 if you really hate yourself) or simply expand an existing ISO using magiciso or something similar.

12: `cd /d x:\` where x is the letter assigned to the folder/CD that contains windows. The /d is needed if you are changing the physical disk

13: `cd boot`

14: `bootsect/nt60 y:` where y is the USB drive. This creates the boot sector.

15: `xcopy x:*.* y:\ /e /h /f` This copies all the files from the Windows installation package to the USB drive.

<http://www.instructables.com/id/How-to-Create-a-Bootable-USB-Drive-Without-Using-A/>